

Keyboard Tray PC-Panel Blackline



PRODUCT FEATURES

- Keyboard tray as an accessory to complete the BlackLine Panel PC series
- The tray is attached to the lower edge of the BlackLine panel
- For secure storage of a keyboard approx. 49 x 19 cm
- Compatible with the BlackLine 21.5' and 18.5' series Panel PCs
- Designed as a sheet metal moulding
- Sufficient stability and anti-slip protection is realised by folding.
- The design/optics and width of the shelf are based on the BlackLine series.
- Ergonomic positioning is ensured by angling.
- The material used is powder-coated steel (similar to the rear cover).

SPECIFICATION

GENERAL:	
Dimensions:	485 mm x 268,46 mm x 58,54 mm
Weight:	ca. 3 kg
Load capacity:	max. 20 kg
max. keyboard dimensions:	485 mm x 219 mm
Material:	Steel
Surface treatment:	powder-coated
Colour:	black
Fixing points:	2 x M5

ORDER INFORMATION

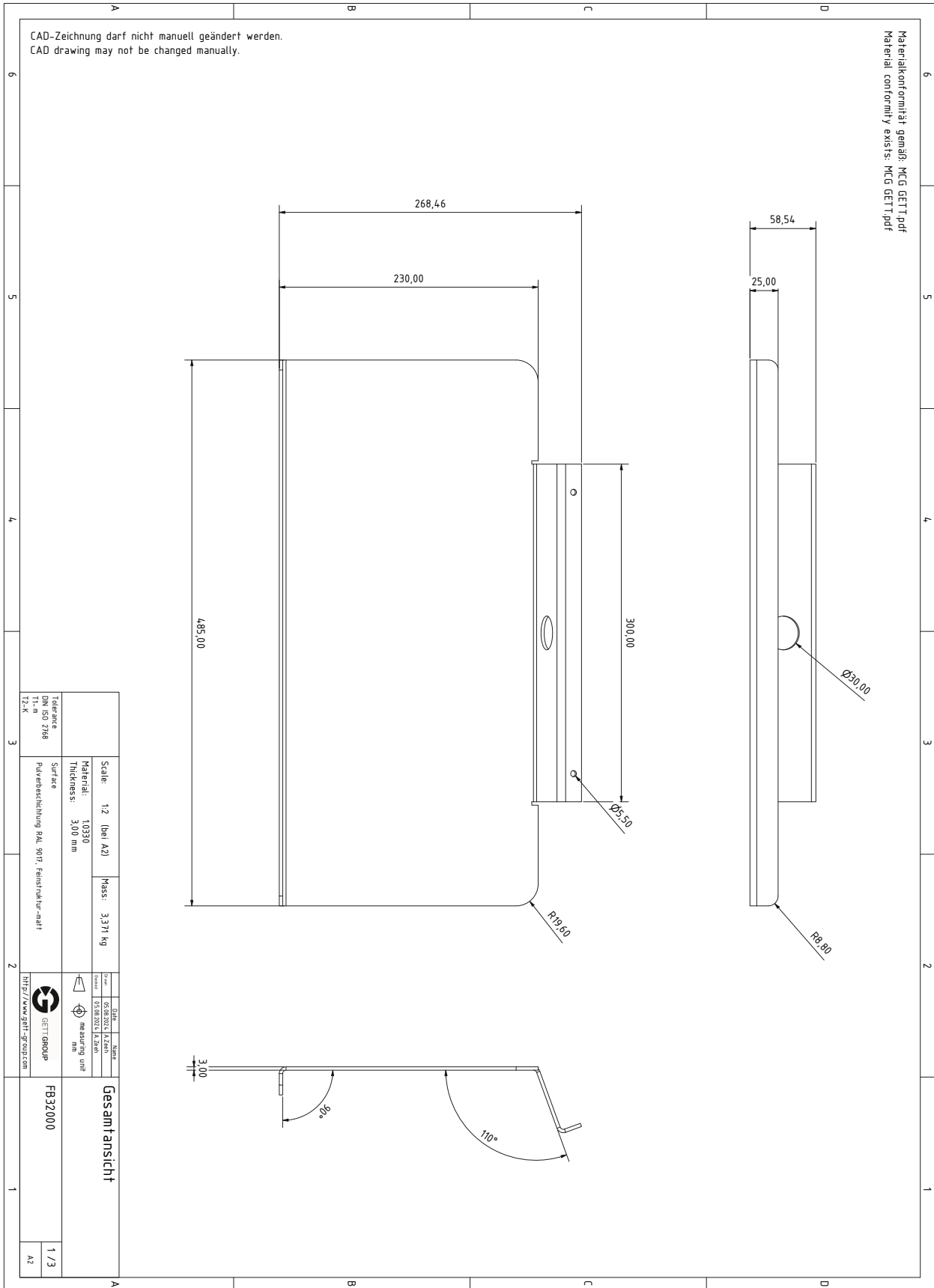
Art No	Full Product Name	Colour	Material
IZBK003	Tastaturablage Blackline 21,5 und 18,5"	Black	Steel
Customised modifications on request			

Errors and changes reserved!

TECHNICAL DRAWING / DIMENSIONAL DRAWING

Wiedergabe sowie Vervielfältigung, Verbreitung und/oder Bearbeitung dieses Dokumentes, Verwertung und Mitteilung seines Inhaltes sind verboten, soweit nicht ausdrücklich gestattet. Zuwiderhandlungen verpflichten zu Schadensersatz. Alle Rechte für den Fall der Patenterteilung, Gebrauchsmuster- oder Geschmacksmustereintragung vorbehalten.

The reproduction, distribution and utilization of this document as well as the communication of its contents to others without express authorization is prohibited. Offenders will be held liable for the payment of damages. All rights reserved in the event of the grant of a patent, utility model or design.



Errors and changes reserved!